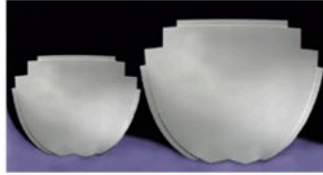


# INFINITY<sub>CYC</sub> WALL SYSTEM

## CORNER CYC INSTALLATION



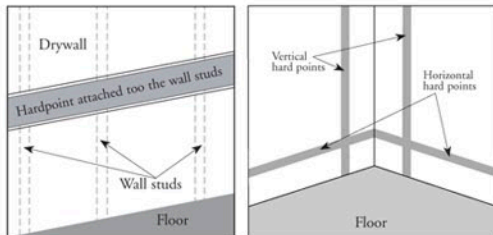
3' Radius Corner • IW3005 36"x36" (91cm x 91cm)  
5' Radius Corner • IW5005 60"x60" (152cm x 152cm)



3' Radius Straight Wall • IW3004 46.18" x 48" (117cm x 122cm)  
5' Radius Straight Wall • IW5004 48" x 96" (122cm x 244cm)

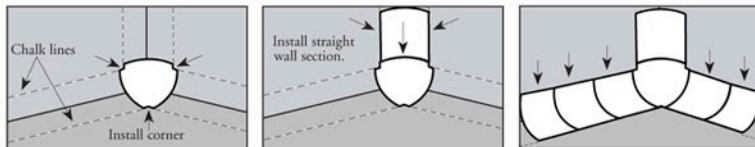
### STEP 1: INSTALLING HARD POINTS

"Hardpoints" are plywood strips retrofitted onto the existing wall studs to create a solid surface on which to install the Cyc sections. Corner Cyc sections need both vertical and horizontal hardpoints.



### STEP 2: INSTALLING THE CYC WALL SECTIONS

Mark the install dimensions for the Cyc system on the wall & floor with a chalk line. Next affix the corner section to the walls and floor at the marks designated by the chalk line. Now you are free to attach the first straight wall section to the top flange of the corner piece and both supporting walls. Continue this process to complete the vertical wall. The straight wall sections can now be installed to the left and right sides of the corner.



### STEP 3: FINISHING THE CYC

Using standard drywall finishing methods, blend all the seams and joints into the walls and floor to produce a continuous smooth and flat surface. Prime, paint and shoot.

